



SPROTT  
SHAW  
LANGUAGE  
COLLEGE

VANCOUVER · SURREY · VICTORIA · TORONTO

CANADA







# Welcome to SSLC!

Sprott Shaw Language College is dedicated to your success. We are proud to support your educational goals and your journey towards an enriched life! With our flexibility to offer you as much or as little study as you need, and with many specialized courses, we have the right plan for you!

We look forward to working towards your success!

## What to expect

SSLC is excited to share in the responsibility for your success, and we will do everything in our power to assist and support you during your time with us. You can expect:

### Prompt, courteous service

Your time is valuable and we do our best to respond quickly and efficiently. You can expect fast and friendly service from all of us at the SSLC family.

### Dedicated, professional instructors

All of our instructors are certified by TESL Canada or other publicly recognized institutions with English language instruction programs. They are dedicated to your success.

### Flexibility & choice

Every student has different goals and dreams. With campuses in four cities across Canada, SSLC has the flexibility and course selection that will help achieve those goals. Study as little or as much as you need!

### Activities & culture

Along with your classes, SSLC provides you with the opportunity to participate in many exciting activities and cultural events that will enhance your learning experience.

### Supportive & knowledgeable advisors

Our advisors will work with you to determine what course(s) best fit your goals and needs; they are also here to help you adjust to your wonderful new life in Canada!

### International friendships

With students from all over the world, you have the chance to create new, international friendships that will last a lifetime!

### Student-focused academic classes

With academic activities and instruction that put the student at the centre, all of our classes are designed with you in mind!

### A life-changing experience

With all that SSLC and Canada have to offer, you can expect an experience and memories that you will never forget!

# Vancouver

## Must See Attractions:

1. Stanley Park
2. Whistler Mountain
3. Capilano Suspension Bridge
4. Fly Over Canada
5. The Rocky Mountains

Considered one of the top five most liveable cities in the world, Vancouver has a host of options for you when you study here! Not only will you find Vancouver a diverse metropolis with a variety of people and cultures, but also a city that is exciting and energetic. With local and world class mountains for sport and sightseeing in the fall and winter, a natural beauty that provides limitless options in the spring and summer, and a thriving night life, there are endless sights to see and activities to do.



### Must See Attractions:

1. Butchart Gardens
2. Craigdarroch Castle
3. Feeding the seals at Fisherman's Wharf
4. Whale watching tours
5. Afternoon tea at the Empress Hotel
6. Surfing in Tofino
7. Royal BC Museum of Natural History

# Victoria

If you are looking for a truly Canadian experience, then this charming city is a perfect choice for you. The rich experience of Victoria will provide you with the big city convenience and amenities with the small town feel. Situated on Vancouver Island, a short ferry ride from the city of Vancouver, you will see that Victoria is a city of beauty surrounded by the serenity of nature. Once you study here, you may never want to leave!



### Must See Attractions:

1. Vancouver (and all its attractions)
2. Historic Fort Langley
3. Crescent Beach
4. Hiking
5. PGA Golf

# Surrey

Just a short ride from downtown Vancouver, Surrey is a family-oriented city with a beauty and splendour all its own. Called the City of Parks, Surrey offers a wealth of opportunities for exploration and experience, and is close enough to downtown Vancouver that you can experience everything that this metropolis has to offer as well. Perfect for families who want to study together or for those who want a closer, more family feel to their campus, Surrey provides the big city experience without the big city expenses.



### Must See Attractions:

1. CN Tower
2. Niagara Falls
3. Professional Sports (NBA, MLB, MLS, NHL)
4. Royal Ontario Museum
5. Ripley's Aquarium of Canada
6. Casa Loma

# Toronto

As Canada's largest city, Toronto is a centre for business, sports, arts, entertainment, and culture. Easily identified by North America's largest free-standing building, the CN Tower (553 meters high), this engaging city has everything that you will need to have a great learning experience. Whether you like socializing at cultural events, developing new networks for business, or getting in on the live action at a professional sporting event (NBA, NHL, MLB, MLS), you can do it in Toronto! Toronto really is a great place to study, and lends itself to so much more!



# Experience the Campuses

## Vancouver: Melville Campus

4,665 sq ft (433 sq m)

- 8 classrooms
- Located in downtown Vancouver on Melville Street
- Close to shops, restaurants, and entertainment
- Public transportation (Skytrain and bus), just steps away from the campus
- Computers, wireless internet, microwaves, refrigerators, and vending machines



## Vancouver: Howe Campus

12,582 sq ft (1,169 sq m)

- 22 classrooms
- Located on Howe Street, close to Pacific Centre (a shopping mall) in downtown Vancouver
- Easily accessible by public transit (Skytrain and bus)
- Wireless internet, student lounge, and computer lab
- Microwaves, refrigerators, and vending machines



## Victoria Campus

10,000 sq ft (929 sq m)

- 15 classrooms
- Located in downtown Victoria in Bastion Square
- Walking distance from shops, restaurants, cafes, and entertainment
- 2 student lounges, computer lab with wireless internet, microwaves
- Vacation programs and customized groups welcome all year



## Surrey Campus

6,912 sq ft (642 sq m)

- 10 classrooms
- Situated in Greater Vancouver's largest suburb
- Wireless internet, microwaves, and refrigerators
- Vacation programs and customized groups welcome all year
- Across from Surrey Central Mall and one of Surrey's largest parks
- Ideal for adults and families with children
- Year-round children & junior ESL programs







## Toronto Campus

16,545 sq ft (1,537 sq m)

- 29 classrooms
- Located near Yonge and Eglinton in bustling midtown Toronto
- Minutes away from shopping, cafes, restaurants, and entertainment
- Public transit stops outside the campus
- Student lounge, computers for student use, wireless internet, microwave, refrigerators, and vending machines
- Vacation programs and customized groups welcome all year



“Sprott Shaw Language College for me was a great opportunity to improve my English. It was an experience that I couldn't miss out on!”

- Niklas Zehner, Germany

# Experience English Your Way:

## English as a Second Language (ESL)

SSLC offers TWO different ways of learning English:

*English Your Way*

### ESL: SKILL COMBINED (SC)

All skills combined into one well-balanced class:

- Grammar, Reading, Writing, Listening, and Speaking

Concentrate on developing your overall level of English through communicative classes that enrich learning and produce fast results.



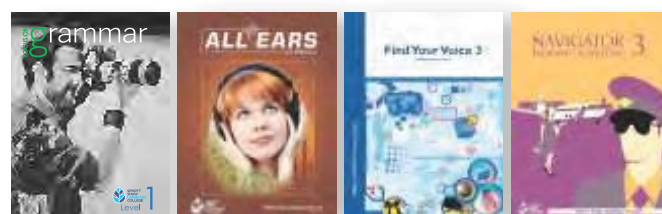
ESL-SC Textbook: American English File

### ESL: SKILL FOCUSED (SF)

All skills separated into five intensive classes:

- Grammar
- Listening
- Reading & Writing
- Pronunciation
- Communication

Focus on developing different skills independently at various class levels, depending on your individual skill levels (flexible level system).



ESL-SF Textbook: SSLC Customized Textbooks

## Choose your HOURS and your COURSES:

5, 10, 15, 20, 25, or 30 hours per week

Choose Your Hours Per Week	Choose Your Time Of Day	Choose Your Course
5	AM	ESL-SF: Choose 1 of the 3 class options <input checked="" type="checkbox"/> Grammar <input type="checkbox"/> Listening <input type="checkbox"/> Reading & Writing
10	AM	ESL-SF: Choose 2 of the 3 class options <input checked="" type="checkbox"/> Grammar <input checked="" type="checkbox"/> Listening <input type="checkbox"/> Reading & Writing
15	AM	ESL-SF: Choose to take all 3 classes <input checked="" type="checkbox"/> Grammar <input checked="" type="checkbox"/> Listening <input checked="" type="checkbox"/> Reading & Writing or ESL-SC: Choose to study <i>all skills</i> in 1 class <input checked="" type="checkbox"/> Grammar, Listening, Reading/Writing, Speaking
20	AM+PM	<b>AM:</b> Choose to study either ESL-SF or ESL-SC <b>and PM:</b> Take <b>1</b> class from the electives
25	AM+PM	<b>AM:</b> Choose to study either ESL-SF or ESL-SC <b>and PM:</b> Take <b>2</b> classes from the electives
30	AM+PM	<b>AM:</b> Choose to study either ESL-SF or ESL-SC <b>and PM:</b> Take <b>3</b> classes from the electives



## ESL: Skill Combined (SC) Time Schedule

Monday - Friday	
9:00-10:00	Speaking, Grammar, Listening, Reading and Writing, combined in one 3-hour class (AM1-3)*
10:00-11:00	
11:00-12:00	
12:00 - 1:00	Lunch or Lunch Class (AM4)**
1:00-2:00	PM1
2:00-3:00	PM2
3:00-4:00	PM3

\*There is a total of 20-minute break(s) in the morning class hours.

## ESL: Skill Focused (SF) Time Schedule

Monday - Friday	
9:00-10:00	Grammar (AM1)
10:00-11:00	Listening (AM2)
11:00-12:00	Reading & Writing (AM3)*
12:00 - 1:00	Lunch or Lunch Class (AM4)**
1:00-2:00	Pronunciation (PM1)
2:00-3:00	Communication (PM2)
3:00-4:00	PM3

\*\*Students can choose to study during lunch break (AM4) at Toronto Campus only.

### PM1

PM1 classes, depending on your level, may include: Functional English, Common Errors and Vocabulary Building, Power Listening, Practical Writing

### PM2

PM2 classes are always a speaking class, and may include: Basic Survival English, Intensive Speaking, Current Events, Social Issues, Thinking Skills

### PM3

PM3 classes are Pronunciation or Individual Focus – for 30-hour students

## Choose to take Free PM Extra! and Free Friday Workshops (applies to both SF and SC)

In addition to offering our regular classes, SSLC also offers FREE PM Extra! after school from Monday through Thursday. Fridays after school, free workshops will be offered.

### FREE SSLC PM Extra!

PM3: (3:00-4:00)

SSLC PM Extra! classes are offered FREE to all students registered for a minimum of 25 hours or more. Types of Free PM Extra! may vary from campus to campus, and are subject to availability.

Examples: English Lounge (conversation class), Idioms and Slang, Speak-Up, Homework Club, Movies, Yoga Club, Guitar Club, and more!

### Friday Free Workshops:

PM3: (3:00-4:00)

Types of Workshops may vary from campus to campus, and are subject to availability.

Examples are:

- Career Development: Perfect Resume, Interview like a Pro, Toastmasters, Workplace Communication
- Academic Development: Success in University, Let's Talk Grammar, Preparing for a Master's Degree
- Business Leadership: Networking for Business, Utilizing LinkedIn, Power Speaking & Business Presentations



"Since my sister finished this school and had a great experience, I had no doubts which school I should apply to. Even though it was hard in the beginning, now I see that it totally pays off. Don't be shy and you will succeed."

- Guilherme Campaner Petersen, Brazil



"Overall, the lessons are great. I can learn correct English grammar, casual English and how to avoid common English mistakes. Teacher Richard's jokes are so funny and I would love teacher Michelle's class to go on longer."

- Takuto Yuzu, Japan



## Experience the Flexibility: English as a Second Language (ESL)

SSLC's friendly and helpful advisors will certainly help you to make the study choices that best suit your goals and needs. Here is an example of two students and the courses they took.

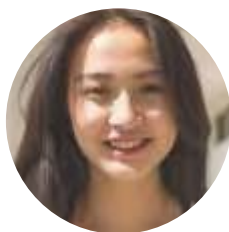
Susi's future goal is to study at a Canadian university next year, so she has chosen the Skill-Focused path to hone her academic English skills as well as the communication elective to improve her speaking and pronunciation skills. She also chose Yoga Club so that she can stay fit and be in an English speaking environment at the same time. After finishing her ESL, she plans to enter SSLC's University Pathway Program.

Peter hopes to immigrate to Canada in the future and has chosen the Skill-Combined schedule to acquire a broader, day-to-day English ability. His interest in music led him to join the Guitar Club, while his afternoon electives will help him to polish his speaking and vocabulary skills.





## Students' Sample Schedules



Susi's Skill-Focused  
schedule (Sample)

MORNING CLASS		
Time	Class	Level
9:00-12:00 (3 hrs)	Grammar	3
	Listening	2
	Reading / Writing	3
<i>*20-minute break (in total) in the morning.</i> <i>*Students are placed in each of the subject classes appropriate for their own language levels according to the results of the placement test.</i>		
12:00 - 13:00	Lunch Break with Friends	

AFTERNOON ELECTIVES		
Time	Class	Level
13:00-14:00 (1 hr)	Pronunciation	2
14:00-15:00 (1 hr)	Communication	2
<i>*10-minute break in the afternoon</i>		

AFTERNOON EXTRA	
15:00-16:00	Yoga Club

IN TOTAL: 25 Hours/week + Extra Club



Peter's Skill-Combined  
schedule (Sample)

MORNING CLASS		
Time	Class	Level
9:00-12:00 (3 hrs)	Grammar, Listening, Reading & Writing, and Speaking	3
<i>*20-minute break (in total) in the morning.</i> <i>*Students are placed at one level according to the results of the placement test.</i>		
12:00 - 13:00	Lunch Break with Friends	

AFTERNOON ELECTIVES		
Time	Class	Level
13:00-14:00 (1 hr)	Common Errors and Vocabulary Building	3
14:00-15:00 (1 hr)	Intensive Speaking	3
<i>*10-minute break in the afternoon</i>		

AFTERNOON EXTRA	
15:00-16:00	Guitar Club

IN TOTAL: 25 Hours/week + Extra Club

Last Updated August 16, 2017 | Subject to Change

# Experience ESL: Youth, Children & Family

## Juniors & Children ESL

Our Surrey campus offers full-time, year-round studies for both Youth (13-17 yrs old) and Children (6-12 yrs old). Similar in nature, these programs offer studies in specific ESL skills such as grammar, reading, writing, and communication. Additionally, students will study academic content which covers school subjects such as math, science, social studies and literature to prepare for study in Canadian elementary and high schools.

	Children	Juniors
Ages	6-12	13-17
ESL Studies	Grammar, Listening, Speaking & Phonics	Grammar, Listening, Reading, Writing, & Speaking
Academic Content	Language Arts (Reading & Writing), Math, Science, Literature, Drama, Art, Social Studies	Science, Fine Arts, Math, Language Arts, Literature, Physical Education, Visual Arts, Career Education





## Youth Bridge Program

For young students who want to attend a Canadian high school, SSLC's Youth Bridge Program provides an excellent opportunity. Our ESL classes with Canadian content will provide your child with the academic tools needed to succeed in school, while the guidance and support that SSLC provides will help create a successful experience all around. Truly, if your child wants to attend high school in Canada, then the Youth Bridge Program is an excellent choice!

## Family Program

At our Surrey campus, we offer classes for adults, youth, and children. This means that you and your family can all study at the same time at the same school. Be with your children and share a learning experience with them while you all reach your goals and improve your English skills!



“

“I learned a lot while I was at SSLC. I learned academic and life skills in class. The level system also helped me. The level of learning for each class depended on my level, so I was able to understand almost everything easily.”

- Ryunkang Kang, Korea

”



Youth, Children & Family



# Experience University Pathway Programs: IEPE & EPE

## Intermediate English for Post-Secondary Education (IEPE)

IEPE is the first of SSLC's two academic preparation programs to get you ready to study for a diploma or degree at an English speaking post-secondary institution (college or university). With intensive academic study, this program will help to prepare you for the challenge of a post-secondary education.

### Program Length:

4, 8, or 12-week Certificate Program

### Entry Requirements:

TOEFL iBT® 45-46, TOEIC® 550, IELTS 4.5 overall (with writing 4.5), or completion of SSLC ESL-SF Level 3 or ESL-SC Level 6, or a pass on our entrance exam. All applicants are also required to write an essay and take an interview.

### Successful Completion:

Completion of all required program components with an overall average of 80%.



“

“Studying in IEPE at SSLC left me with good impression. The lessons were entertaining with an accessible explanation of the lesson topic. I am very happy that I chose this college and the IEPE program.”

- Iuliia Lening, Russia

”







## English for Post-Secondary Education (EPE)

EPE is the official Pathway Program at SSLC. This program will allow you to gain entry into selected partner colleges and universities without having to take an official entrance test or other official test score such as IELTS or TOEFL®. Much like IEPE, English for Post-Secondary Education provides training for the academic English skills necessary for college/university level study. However, it goes a step further; EPE also prepares you with study skills for a successful university experience!

### Program Length:

4, 8, or 12-week Certificate Program  
(Must complete 12-week program  
to enter partner colleges and universities)

### Entry Requirements:

TOEFL iBT® 61, TOEIC® 650, IELTS 5.5 overall (with writing 5.5), completion of SSLC ESL-SF Level 4 or ESL-SC Level 8, or a pass on our entrance exam. All applicants are also required to write an essay and take an interview.

### Successful Completion:

Exit test score of 65% or higher and completion of all required program components with an overall average of 80% or higher.



“

“In IEPE and EPE, students can learn a lot about how to write an essay and using different styles such as APA, MLA, and Chicago which are very useful. Also, students can learn how to improve their presentation skills in these programs.”

- Wei Hao Chou, Taiwan

”

## SSLC Pathway Program Advantages

- Bypass English language entry requirements for selected partner colleges and universities
- Small class sizes for optimum academic benefit
- Academic preparation covering all areas: reading, writing, speaking, vocabulary, study skills, and note taking
- Access to experienced and helpful teachers, informative pathway advisors and knowledgeable academic advisors

## Experience University Pathways

Sprott Shaw Language College can help you achieve your academic goals and get into university or college in Canada, United States, or Europe. With our IEPE and EPE programs along with our many partners and affiliated institutions, we can help you study what you want and where you want!



## SSLC Pathway Benefits & Services

With our commitment to support your academic endeavours, SSLC does its best to provide you with the tools and services that will benefit your academic journey including:

- Free application assistance
- Access to experienced and helpful teachers, informative pathway advisors and knowledgeable student advisors
- Support for obtaining conditional letters of acceptance and letters of acceptance from partner universities and colleges
- Access to many SSLC partner colleges and universities WITHOUT an IELTS or TOEFL® score

- Free additional Pathway support
- Free online feedback on assignments
- Comprehensive academic training with our IEPE and EPE programs

- Monthly school tours and information sessions with a variety of universities and colleges
- Additional learning opportunities including extra classes, workshops and seminars related to post-secondary skills
- Guest speakers
- Visits from college and university staff

### Pathway Partners:



# Experience Language Enhancement Programs:

## BE & PMM

### Business English (BE)

Business English is designed to develop your communication skills in everyday business and provide a foundation for further studies and career advancement in the business world. Business English brings you into a modern business environment where technology plays an important role in the day-to-day operations. Business English will also enable you to read, write, understand, and discuss many important business-related topics and concepts using newspaper articles, textbooks, podcasts, and websites. As a bonus, SSLC's Business English program also includes aspects of the Cambridge Business English Vantage Exam, an internationally recognized qualification that provides practical, everyday English skills necessary for success in an English-speaking working environment and in international business.

#### Program Length:

4 to 8-week Certificate Program

#### Entry Requirements:

TOEFL iBT® 45-46, TOEIC® 550, IELTS 4.5 overall, completion of SSLC ESL-SF Level 3 or ESL-SC Level 6, or a pass on our entrance exam.

#### Successful Completion:

Completion of all required program components with an overall average of 70%.

### SSLC BE Program Advantages:

- Become an effective communicator in a professional business environment
- Learn how to negotiate, conduct meetings, and communicate in a clear and assertive way
- Participate in field trips and engage with professional guest speakers in business conversations



“At SSLC, every teacher was so nice, especially my Business English teacher. He had a lot of knowledge outside the book so I appreciate SSLC very much! (This is a picture of me with my teacher.)”

- Cheng-Kai Lee, Taiwan





## Power Speaking & Modern Media (PMM)

PMM is designed to develop your speaking, communication and most importantly presentation skills through the lens of modern media. In this program, you will have the opportunity to discuss current events and examine the influence of media on the world around us all while bettering your English and building your self-confidence!

### Program Length:

4 or 8-week Certificate Program

### Entry Requirements:

TOEFL iBT® 45-46, TOEIC® 550, IELTS 4.5 overall, completion of SSLC ESL-SF Level 3 or ESL-SC Level 6, or a pass on our entrance exam.

### Successful Completion:

Completion of all required program components with an overall average of 70%.

### SSLC PMM Program Advantages:

- Field trips and outings
- Improved presentation skills, a value in any language
- Valuable experience in real-life situations, such as a job interview in front of a panel
- Become a more confident speaker



“At SSLC they have a variety of English programs and monthly TOEIC test. I decided to go to PMM class and never regretted it. We are always having different conversations and I am learning something new everyday. It motivates me to come to class and I scored much better on my TOEIC test than I did back home!”

- Yu Jeong Jin, Korea

”



# Experience Language Enhancement Programs: CACCT & ETT

## Communication for Airline Cabin Crew Training (CACCT)

CACCT emphasizes the specific use of English language in the airline industry, and is designed to prepare you for future employment as a flight attendant. Taught by a former airline crew member, the program equips you with the necessary skills to successfully land an airline cabin crew position.

### Program Length:

4 or 8-week Certificate Program (10 hrs/wk)

### Entry Requirements:

TOEFL iBT® 45-46, TOEIC® 550, IELTS 4.5, completion of ESL-SF Level 3 or ESL-SC Level 6, or a pass on our entrance exam. Interview may be required.

### Successful Completion:

Completion of all required program components with an overall average of 70% and an attendance of 80% or higher.

## SSLC CACCT Program Advantages:

- Resume development, interview skills, and industry-specific vocabulary
- Customer service skills and passenger relations
- Emergency procedures

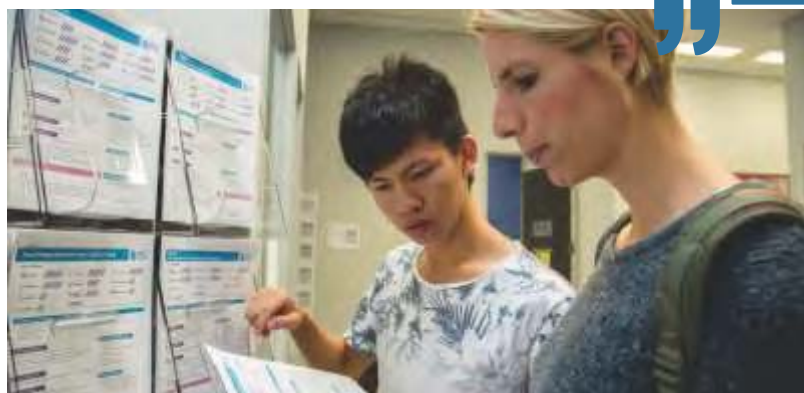


“

“As a student who wants to become a pilot, CACCT helped me to understand skills and knowledge related to the airline business. The course is recommended not just to the students who want to become an airline cabin crew member. I also strongly recommend this program to any student who want to work in the airline business.”

- Wasem Mufleh Alshammari, Saudi Arabia

”





## English Through Translation (ETT)

This specialized program has been developed specifically for Korean students learning English. It focuses on translating day-to-day language such as slang, idioms, and commonly used expressions in order to enhance your understanding of English. Along with studies in sentence structure and vocabulary development through article translation, the lessons include audio and video dictation to practice pronunciation and intonation through a period of intense speaking and recording.

### Program Length:

4 or 8-week Certificate Program

### Entry Requirements:

TOEFL iBT® 40, TOEIC® 470, IELTS 3.5, completion of SSLC ESL-SF Level 2 or ESL-SC Level 5, or a pass on our entrance exam. Interview may be required.

### Successful Completion:

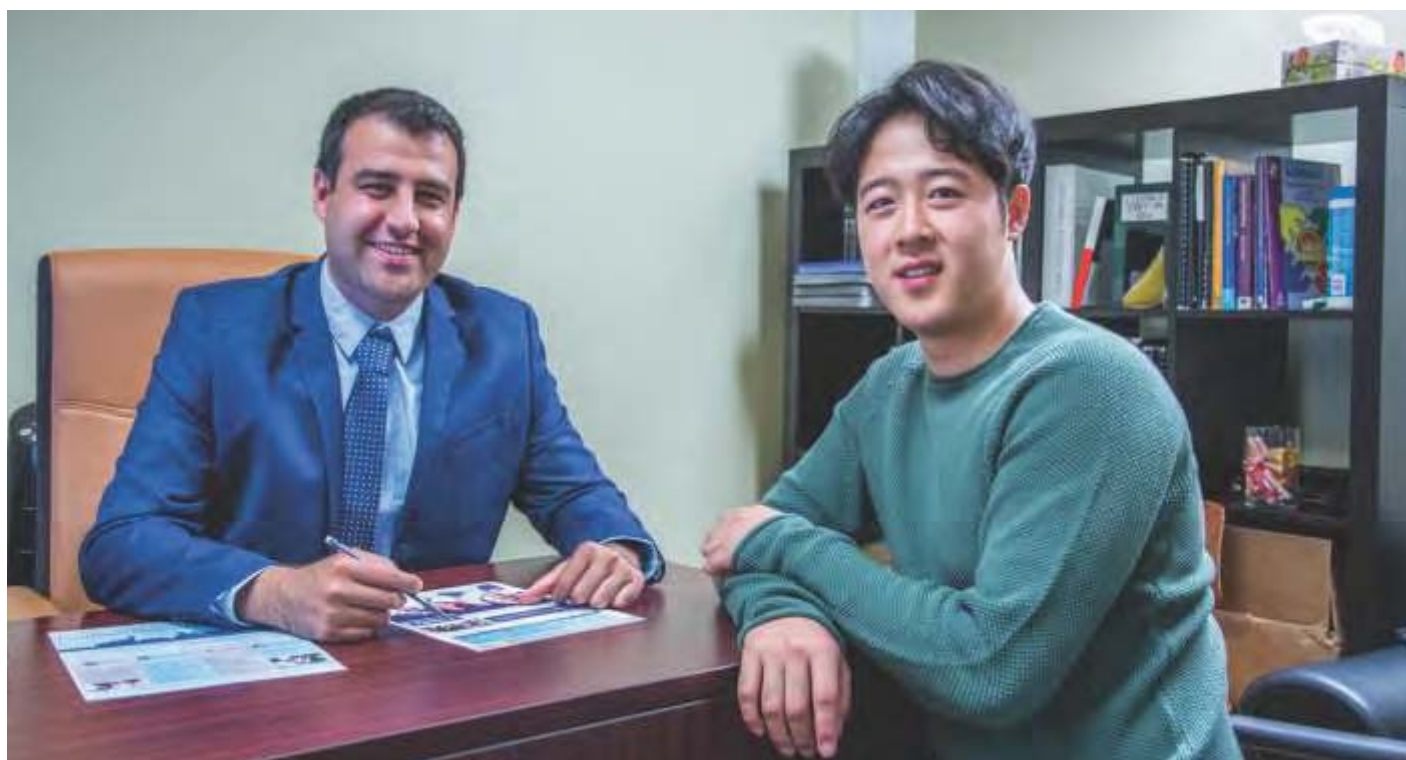
Completion of all required program components with an overall average of 70%.



“This course is so useful. I can learn expressions that we use in our daily lives and the teacher Amy is very friendly and fun. I never felt bored. If I could stay longer in this program, I would!”  
- Uijin Jeong, Korea

### SSLC ETT Program Advantages:

- Understand the nuances of English through Korean language translation
- Learn how to translate day-to-day language from Korean to English and English to Korean
- Develop practical English skills with small class sizes



# Experience Test Preparation: TOEFL iBT® & TOEIC®

Sprott Shaw Language College offers you a variety of opportunities to work towards improved scores on numerous English competency tests. With a proven track record in helping students reach their goals on the most widely accepted tests in the industry, SSLC will support you in improving yours and reaching your goal.

We don't just teach you to take the test, we teach you to succeed on the test!



## Test of English as a Foreign Language iBT® (TOEFL iBT®)

Recognized by most colleges and universities around the world, the TOEFL iBT® provides you with the credentials to gain entrance to the post-secondary institution of your choice. SSLC gives you the opportunity to achieve the score that you need through its well-designed test preparation course. With oral practice for the speaking component and two full practice tests every month, you will see your score improve alongside your English.

**Program Length:** 4 to 12-week Certificate Program

### Entry Requirements:

TOEFL iBT® 45-46, TOEIC® 550, IELTS 4.5 overall, completion of SSLC ESL-SF Level 3 or ESL-SC Level 6, or a pass on our entrance exam.

### Successful Completion:

Completion of 70% of all required program components with an attendance of 80 % or higher.



“My friends took the TOEFL preparation program at SSLC and strongly advised me to give it a try. The greatest thing about the class is our instructor. Now it's my fourth month in class instead of the originally planned 2 months.”

- Son Mi Lee, Korea

## SSLC TOEFL iBT® Test Prep Advantages:

- 2 full practice tests each month
- One-on-one after school advising
- University placement advising if you wish to attend a North American university





## Test of English for International Communication (TOEIC®)

Recognized by employers around the world since 1979, TOEIC® provides you with the credentials to get hired, placed, and promoted in the world's increasingly competitive workforce. Taking SSLC's TOEIC® test preparation course helps prepare you to reach your employment goals!

**Program Length:** 4 to 8-week Certificate Program

### Entry Requirements:

TOEFL iBT® 45-46, TOEIC® 550, IELTS 4.5 overall, completion of SSLC ESL-SF Level 3 or ESL-SC Level 6, or a pass on our entrance exam.

### Successful Completion:

Completion of 70% of all required program components with an attendance of 80 % or higher.



“

“I knew that I needed to improve my skills in grammar the most, so I decided to take the actual TOEIC program at SSLC Vancouver. This was the correct decision as I consistently saw improvements on my TOEIC score.”

- Tomu Tanaka, Japan

”

### SSLC TOEIC® Test Prep Advantages:

- 2 full practice tests each month
- One-on-one after school advising
- Oral communication practice for workplace communication



Official TOEIC Testing Centre

# Experience Test Preparation: IELTS, FCE/CAE

## International English Language Testing System (IELTS)

The IELTS test readies you to gain entrance to English-speaking post-secondary institutions around the world, and SSLC prepares you for all aspects of the test. Not only will you develop the academic skills needed for success on the test, but also an understanding of the intricacies of the test. You will learn how to manage your time while taking the test, how to scan and summarize information, and how to understand the individual elements that make up the test. Your post-secondary dreams are within reach with SSLC's IELTS preparation classes.

**Program Length:** 4 to 12-week Certificate Program

### Entry Requirements:

TOEFL iBT® 40, TOEIC® 470, IELTS 3.5 overall, completion of SSLC ESL-SF Level 2 or ESL-SC Level 5, or a pass on our entrance exam.

### Successful Completion:

Completion of 70% of all required program components with an attendance of 80 % or higher.

### SSLC IELTS Test Prep Advantages:

- Training modules to help both prospective university students and prospective immigrants
- University placement advising if you wish to attend a North American university
- Flexibility to take any duration, from 4 to 12 weeks in the program



“

“After obtaining a law degree and extensive online searching I decided to take IELTS at SSLC. The dynamic and active instructor is the major reason I am happy with my choice, but I also love to participate in the activities offered by the school - basketball, movies, kayaking - we always have something to do. This the beginning of my big Canadian journey!”

- Hardeep Jarnail, France

”







## Cambridge First Certificate in English (FCE) & Cambridge Certificate in Advanced English (CAE)

The Cambridge series of academic tests prepares you to demonstrate that you have the language skills needed to communicate in an English-speaking environment (FCE) and further demonstrate that you have necessary requirements to enter universities and businesses around the world (CAE). Taking our FCE and CAE test prep programs will provide you with the tools you need for success in business, school, and English communication around the world.

**Program Length:** 4 to 12-week Certificate Program

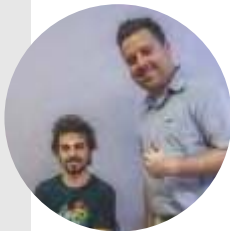
**Entry Requirements:**  
FCE: TOEFL iBT® 61, TOEIC® 650, IELTS 5.5 overall, completion of SSLC ESL-SF Level 4 or ESL-SC Level 8, or pass on our entrance exam.  
CAE: TOEFL iBT® 63, TOEIC® 700, IELTS 6.0 overall, completion of SSLC ESL-SF Level 5 or ESL-SC Level 9, or pass on our entrance exam.

**Successful Completion:**  
Completion of all required program components with an overall average of 80% and an attendance of 70 % or higher.

“I was able to learn a lot within a short time in my Cambridge course because of the small class, clear structure and kind teacher who was eager to answer ALL our questions.”  
- Helen Winterhalter, Germany

**SSLC FCE/CAE Test Prep Advantages:**

- One-on-one access to experienced and helpful teachers, informative Pathway advisors, and knowledgeable academic advisors. One-on-one after school advising
- Monthly tours and information meetings with colleges and universities
- Personalized education with small class sizes



“I'd like to give big thanks to the staff, my homestay family and especially to my CAE teacher Andrew. I'd recommend this program to anyone who wants to improve their English significantly and focus on their weaknesses for the CAE exam.”  
- Steve Roy, Switzerland



## Experience Vacation Programs for Youth: Global Leaders

Vacation programs or camps for youth are a specialty at SSLC! With programs in cities across Canada, we offer your children the opportunity to develop their English skills, make international friends, gain independence, become more confident, and have an experience that will forever remain a valued part of their lives!

Our premiere vacation program, Global Leaders aims to develop leadership skills and self-awareness in youth. Taking place on the Vancouver campus of the world-renowned University of British Columbia (UBC), students stay in residence and participate in leadership-focused classes in the morning, fun and educational clubs and outings in the afternoon, and activities in the evenings that are designed to encourage team building in a fun and supportive atmosphere. Much like those who have been a part of Global Leaders in the past, your children will have the time of their lives and will want the experience to last longer than the few weeks they are there!





Quick Info	Global Leaders
Ages	9 – 17 years
Dates	July 1 - Aug 5, 2018
Duration	2, 3 or 4 weeks (Sun/Mon Start Dates)

Highlights	Global Leaders
<ul style="list-style-type: none"> <li>• 4 day / 3 night Rocky Mountain Tour</li> <li>• 2 half-day &amp; 2 full-day activities each week</li> <li>• Leadership-focused curriculum with goal setting</li> <li>• Accommodation at the University of British Columbia</li> <li>• Lifelong friendships</li> </ul>	



“

“I would come back next year because I had such a good time and I could make many friends in this camp.”

- Yuha Taniuchi, Japan

”



# Experience Vacation Programs for Youth: Summer Camps





## Summer Camps

SSLC offers your child an opportunity to improve their English, meet new friends and stay in one of three amazing Canadian cities. With Surrey Good-Time Summer (SGTS), your child will study full-time while experiencing all the excitement that Surrey and Vancouver have to offer. On the other hand, if you prefer a little less study and a little more fun, our Toronto and Victoria summer camps offer just that with classes in the morning and activities in the afternoon. Regardless of your choice, your child will be able to explore these amazing cities and gain practical use of English while making new friends. It is an experience your child will thank you for!



Quick Info	Surrey Good-Time Summer
Duration	2 to 4 weeks
Ages	8 - 17 years
Study	25 hrs / week
Activities	3 afternoons / 1 weekend per week
Accommodation	Homestay with ride service to and from school

Quick Info	Toronto Summer Camp
Duration	2 to 4 weeks
Ages	14 - 17 years
Study	15 hrs / week
Activities	5 weekdays / 1 weekend per week
Accommodation	Homestay

Quick Info	Victoria Summer Camp
Duration	2 to 4 weeks
Ages	12 - 17 years
Study	15 hrs / week
Activities	5 weekdays / 1 weekend per week
Accommodation	Homestay







Experience Vacation Programs  
for Youth:  
Winter Camps & Customized Programs



## Winter Camps

Similar to our summer camps, SSLC offers your child the chance to experience the Canadian winter and all that it has to offer. Skiing, snowboarding, snow tubing, and snowshoeing are just some of the great activities that your child will combine with English studies to create a magical winter experience full of fun, friendships, and education. Come join us.



Quick Info	Surrey Winter Camp
Duration	2 to 4 weeks
Ages	8 - 17 years
Study	25 hrs / week
Activities	3 afternoons / 1 weekend per week
Accommodation	Homestay with ride service to and from school

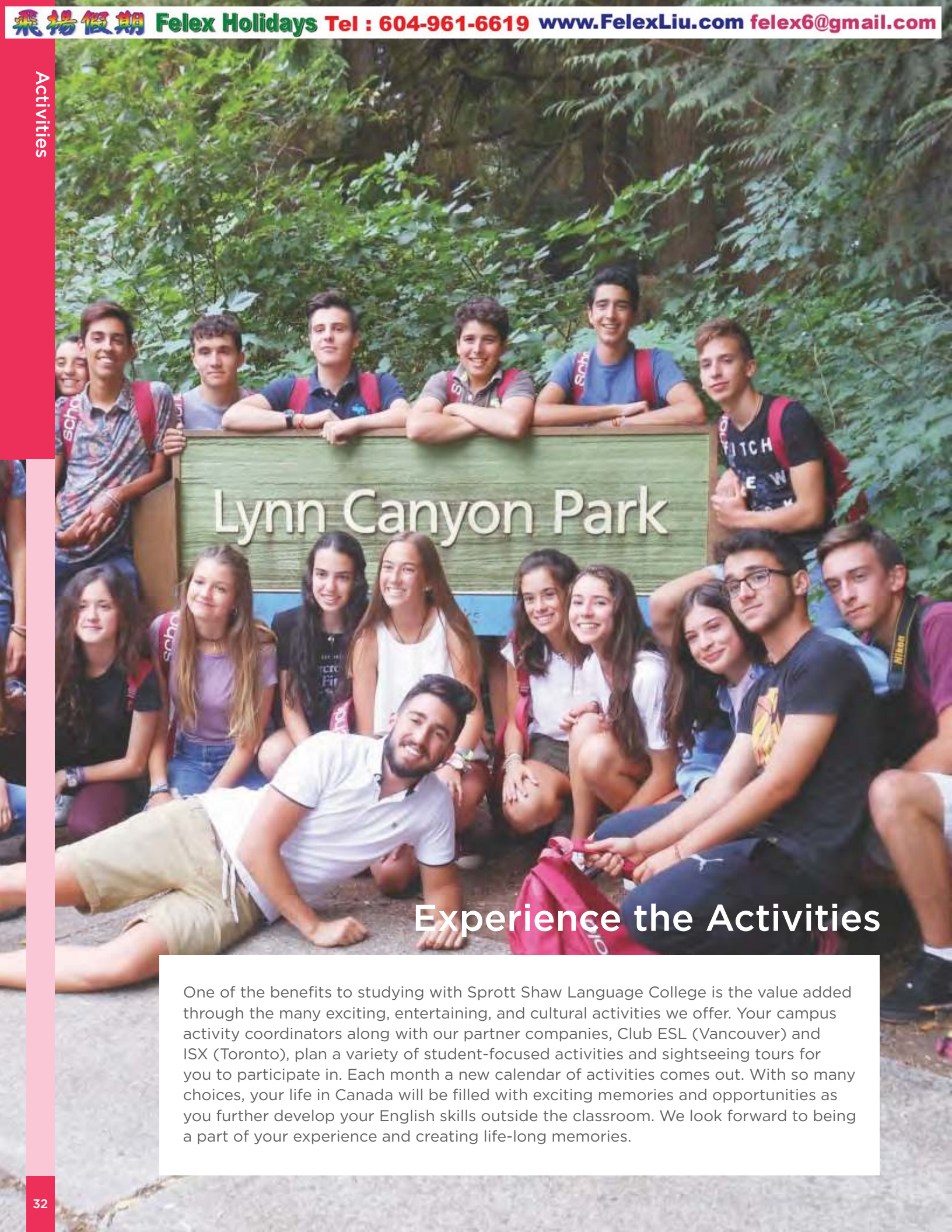
Quick Info	Toronto Winter Camp
Duration	2 to 4 weeks
Ages	14 - 17 years
Study	15 hrs / week
Activities	5 weekdays / 1 weekend per week
Accommodation	Homestay

Quick Info	Victoria Winter Camp
Duration	2 to 4 weeks
Ages	12 - 17 years
Study	15 hrs / week
Activities	5 weekdays / 1 weekend per week
Accommodation	Homestay

## Customized Group Programs

At SSLC, we recognize that different groups require different schedules, English classes, or activities. With groups as small as six, SSLC can prepare a customized program to suit your needs. Contact us to start designing a unique program that's perfect for you and your group.





## Lynn Canyon Park

### Experience the Activities

One of the benefits to studying with Sprott Shaw Language College is the value added through the many exciting, entertaining, and cultural activities we offer. Your campus activity coordinators along with our partner companies, Club ESL (Vancouver) and ISX (Toronto), plan a variety of student-focused activities and sightseeing tours for you to participate in. Each month a new calendar of activities comes out. With so many choices, your life in Canada will be filled with exciting memories and opportunities as you further develop your English skills outside the classroom. We look forward to being a part of your experience and creating life-long memories.



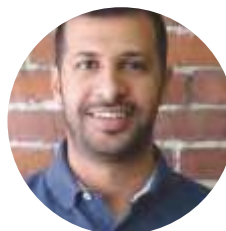


“Besides learning English with our teachers, we have the opportunity to participate in specific clubs in the afternoon and do activities to increase our vocabulary while having fun. I love our monthly calendar which has different events every day, and we can experience more diversity and culture. The last activity I went to was beach volleyball and it was amazing!”

- Isabelle Ramos de Oliveira, Brazil



”



“Victoria is the best place to live and study! The school has nice classrooms and the teachers are awesome! I enjoy the activities. They have a lot of variety. I really like the school and want to continue learning here as long as I can.”

- Bader, Saudi Arabia

“



”



“I like going to clubs to dance. Enjoying the time with friends and dancing together is really fun. Also, I joined the Bowen Island trip. We explored the island, I tried kayaking for the first time in my life, and spent time with friends.”

- Angel, Taiwan

“

”



“

“I really enjoyed the after school activities with classmates...lots of English practice with friends. Victoria is a beautiful and safe city.”

- Kana, Japan

”



# Experience Living in Canada: GEC Residence

With our partners, Global Education City (GEC), SSLC offers those students coming to Vancouver the choice of independent living at a residence in downtown Vancouver or in the neighbouring city of Burnaby. These elegant, fully furnished rooms offer private and shared rooms in apartment suites with fully equipped kitchens to give you a fantastic place to live YOUR lifestyle while studying. Named in the top ten for "Most Luxurious Student Housing" in North America, we are sure that you will love your stay in GEC Residence in Canada!



“My homestay family was very nice to me and made me feel like I was in my own home. It was such a good experience!”  
- Thiago Dornelas Franca, Brazil



## Homestay

One of the ways to truly experience Canadian culture is by staying with a homestay family. While staying at a homestay, you have the opportunity to become part of a Canadian family and develop your English skills while enjoying your Canadian life.





# Experience Career Choices: Vancouver International College Career Campus

If you are focusing on developing your career while studying in Canada, SSLC's sister school, VIC Career Campus (VIC-CC) is an excellent option. VIC-CC offers programs in the fields of English language teacher training, global business, translation and customer service for a variety of potential career paths. Take the next step towards your career goals at VIC-CC.

## Teaching English to Speakers of Other Languages (TESOL)

- TESOL
- TESOL with Practicum
- TESOL Advanced
- TESOL Advanced Online
- TESOL for Adults
- TESOL for Adults with Practicum
- TESOL for Children
- TESOL for Children with Practicum
- TESOL for Middle School
- TESOL for Middle School with Practicum
- TESOL for Test Preparation
- TESOL for Test Preparation with Practicum

## Global Business

- Global Business Expertise (GBE)
- Advanced Global Business Expertise with Co-op (AGBE)

## Customer Service

- Customer Service Professional (CSP)
- Advanced Customer Service Professional with Co-op (ACSP)

## Translation

- Interpreting and Translation - Korean (IT-K)



# Experience the Programs:

## Program Offerings Summary

Program	Acronym	Admission Requirements	Campus Offered
English as a Second Language: Skill Focused	ESL-SF	No	Vancouver, Toronto, Victoria, Surrey
English as a Second Language: Skill Combined	ESL-SC	No	Vancouver, Toronto
Test Preparation Program: TOEFL iBT®	TOEFL iBT®	Yes	Vancouver
Test Preparation Program: TOEIC®	TOEIC®	Yes	Vancouver
Test Preparation Program: IELTS	IELTS	Yes	Vancouver, Toronto, Victoria, Surrey
Test Preparation Program: FCE / CAE	FCE / CAE	Yes	Vancouver, Toronto
Pathway Program: Intermediate English for Post-Secondary Education	IEPE	Yes	Vancouver, Toronto, Victoria
Pathway Program: English for Post-Secondary Education	EPE	Yes	Vancouver, Toronto, Victoria
Language Enhancement Program: Business English	BE	Yes	Vancouver, Toronto, Victoria
Language Enhancement Program: Power Speaking & Modern Media	PMM	Yes	Vancouver, Toronto, Victoria
Language Enhancement Program: Communicationfor Airline Cabin Crew Training	CACCT	Yes	Toronto
Language Enhancement Program: English Through Translation (Korean language only)	ETT	Yes	Toronto
Vacation Program: Global Leaders	GL	No *age restrictions	Vancouver
Vacation Program: Summer Camps	N/A	No *age restrictions	Toronto, Victoria, Surrey
Vacation Program: Winter Camps	N/A	No *age restrictions	Toronto, Victoria, Surrey





[www.facebook.com/studysslc/](https://www.facebook.com/studysslc/)  
[www.twitter.com/StudySSLC](https://www.twitter.com/StudySSLC)  
[www.instagram.com/sprott\\_shaw\\_language\\_college\\_/](https://www.instagram.com/sprott_shaw_language_college_/)  
[www.pinterest.com/sslccanada/](https://www.pinterest.com/sslccanada/)

Information contained within is subject to change without notice.  
For the most up-to-date information, please visit our website at [www.studysslc.com](http://www.studysslc.com)





ESL for Adults,  
Juniors and Children



Language  
Enhancement  
Programs



Test Preparation  
Programs



University Pathway  
Programs



Vacation  
Programs



SPROTT  
SHAW  
LANGUAGE  
COLLEGE

Subsidiaries of CIBT Education Group



IRIX DESIGN GROUP